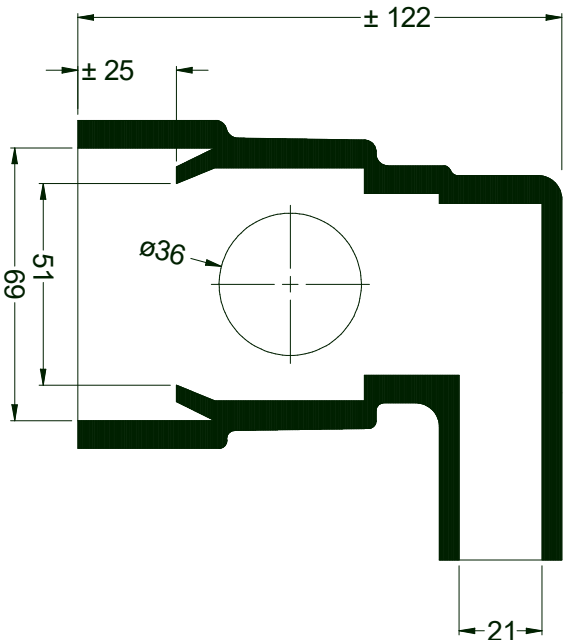
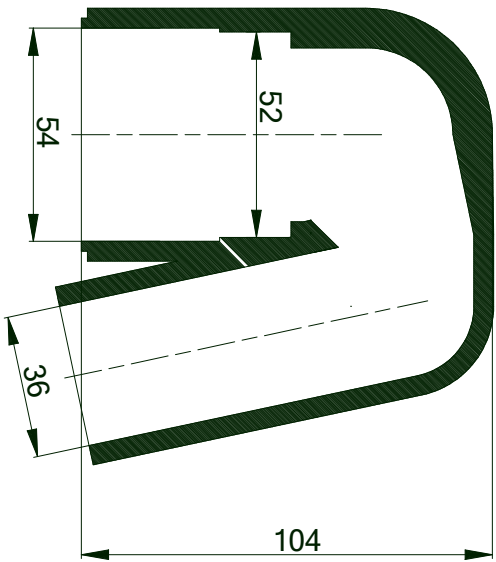


DTN 1 connection



DTN 2 connections



DTN connection 180°

The dimensions stated above are indications only.  
Due to the fact that the material is rubber, more exact dimensions can not be given.

B	x	x		x		x
A	x	Rubber moulding DTN	Rubber	See Dimension Drawing	x	
Partnummer	Quantity	Name	Material and/or subassembly	Norm or size	Remark	

American Projection		Description		Issue	Date	Change	Drawing nr.
Drawn by	Geert van Nieuwenhuizen	Scale	Rubber moulding	A	10-05-2010	Released	Rubber moulding DTN
Checked by	Erdogan	unit of measur.	mm	B	24-08-2020	180° connection changed	Sheet 1/1
DINTRA TRANSMISSIES V.O.F		Remarks					Surface Roughness
							▽ 1,6 Ra